

**GPIB**

# **Getting Started with Your CPCI-GPIB or PMC-GPIB and the NI-488.2M™ Software for Windows 95**

December 1996 Edition  
Part Number 321383A-01

© Copyright 1996 National Instruments Corporation.  
All Rights Reserved.

---



### **Internet Support**

support@natinst.com

E-mail: info@natinst.com

FTP Site: ftp.natinst.com

Web Address: <http://www.natinst.com>



### **Bulletin Board Support**

BBS United States: (512) 794-5422

BBS United Kingdom: 01635 551422

BBS France: 01 48 65 15 59



### **Fax-on-Demand Support**

(512) 418-1111



### **Telephone Support (U.S.)**

Tel: (512) 795-8248

Fax: (512) 794-5678



### **International Offices**

Australia 02 9874 4100, Austria 0662 45 79 90 0, Belgium 02 757 00 20,  
Canada (Ontario) 905 785 0085, Canada (Québec) 514 694 8521, Denmark 45 76 26 00,  
Finland 09 527 2321, France 01 48 14 24 24, Germany 089 741 31 30,  
Hong Kong 2645 3186, Israel 03 5734815, Italy 02 413091, Japan 03 5472 2970,  
Korea 02 596 7456, Mexico 5 520 2635, Netherlands 0348 433466,  
Norway 32 84 84 00, Singapore 2265886, Spain 91 640 0085, Sweden 08 730 49 70,  
Switzerland 056 200 51 51, Taiwan 02 377 1200, U.K. 01635 523545

### **National Instruments Corporate Headquarters**

6504 Bridge Point Parkway Austin, TX 78730-5039 Tel: (512) 794-0100

# Important Information

---

## Warranty

The CPCI-GPIB and PMC-GPIB hardware are warranted against defects in materials and workmanship for a period of two years from the date of shipment, as evidenced by receipts or other documentation. National Instruments will, at its option, repair or replace equipment that proves to be defective during the warranty period. This warranty includes parts and labor.

The media on which you receive National Instruments software are warranted not to fail to execute programming instructions, due to defects in materials and workmanship, for a period of 90 days from date of shipment, as evidenced by receipts or other documentation. National Instruments will, at its option, repair or replace software media that do not execute programming instructions if National Instruments receives notice of such defects during the warranty period. National Instruments does not warrant that the operation of the software shall be uninterrupted or error free.

A Return Material Authorization (RMA) number must be obtained from the factory and clearly marked on the outside of the package before any equipment will be accepted for warranty work. National Instruments will pay the shipping costs of returning to the owner parts which are covered by warranty.

National Instruments believes that the information in this manual is accurate. The document has been carefully reviewed for technical accuracy. In the event that technical or typographical errors exist, National Instruments reserves the right to make changes to subsequent editions of this document without prior notice to holders of this edition. The reader should consult National Instruments if errors are suspected. In no event shall National Instruments be liable for any damages arising out of or related to this document or the information contained in it.

EXCEPT AS SPECIFIED HEREIN, NATIONAL INSTRUMENTS MAKES NO WARRANTIES, EXPRESS OR IMPLIED, AND SPECIFICALLY DISCLAIMS ANY WARRANTY OF MERCHANTABILITY OR FITNESS FOR A PARTICULAR PURPOSE. CUSTOMER'S RIGHT TO RECOVER DAMAGES CAUSED BY FAULT OR NEGLIGENCE ON THE PART OF NATIONAL INSTRUMENTS SHALL BE LIMITED TO THE AMOUNT THEREOF PAID BY THE CUSTOMER. NATIONAL INSTRUMENTS WILL NOT BE LIABLE FOR DAMAGES RESULTING FROM LOSS OF DATA, PROFITS, USE OF PRODUCTS, OR INCIDENTAL OR CONSEQUENTIAL DAMAGES, EVEN IF ADVISED OF THE POSSIBILITY THEREOF. This limitation of the liability of National Instruments will apply regardless of the form of action, whether in contract or tort, including negligence. Any action against National Instruments must be brought within one year after the cause of action accrues. National Instruments shall not be liable for any delay in performance due to causes beyond its reasonable control. The warranty provided herein does not cover damages, defects, malfunctions, or service failures caused by owner's failure to follow the National Instruments installation, operation, or maintenance instructions; owner's modification of the product; owner's abuse, misuse, or negligent acts; and power failure or surges, fire, flood, accident, actions of third parties, or other events outside reasonable control.

## Copyright

Under the copyright laws, this publication may not be reproduced or transmitted in any form, electronic or mechanical, including photocopying, recording, storing in an information retrieval system, or translating, in whole or in part, without the prior written consent of National Instruments Corporation.

## Trademarks

NAT4882®, NI-488®, Turbo488®, NI-488.2™, and TNT4882C™ are trademarks of National Instruments Corporation. Product and company names listed are trademarks or trade names of their respective companies.

## WARNING REGARDING MEDICAL AND CLINICAL USE OF NATIONAL INSTRUMENTS PRODUCTS

National Instruments products are not designed with components and testing intended to ensure a level of reliability suitable for use in treatment and diagnosis of humans. Applications of National Instruments products involving medical or clinical treatment can create a potential for accidental injury caused by product failure, or by errors on the part of the user or application designer. Any use or application of National Instruments products for or involving medical or clinical treatment must be performed by properly trained and qualified medical personnel, and all traditional medical safeguards, equipment, and procedures that are appropriate in the particular situation to prevent serious injury or death should always continue to be used when National Instruments products are being used. National Instruments products are NOT intended to be a substitute for any form of established process, procedure, or equipment used to monitor or safeguard human health and safety in medical or clinical treatment.

# FCC/DOC Radio Frequency Interference Class A Compliance

---

This equipment generates and uses radio frequency energy and, if not installed and used in strict accordance with the instructions in this manual, may cause interference to radio and television reception. Classification requirements are the same for the Federal Communications Commission (FCC) and the Canadian Department of Communications (DOC). This equipment has been tested and found to comply with the following two regulatory agencies:

## Federal Communications Commission

This equipment has been tested and found to comply with the limits for a Class A digital device, pursuant to part 15 of the FCC Rules. These limits are designed to provide reasonable protection against harmful interference when the equipment is operated in a commercial environment. This equipment generates, uses, and can radiate radio frequency energy and, if not installed and used in accordance with the instruction manual, may cause harmful interference to radio communications. Operation of this equipment in a residential area is likely to cause harmful interference in which case the user will be required to correct the interference at his own expense.

**Notices to User:** *Changes or modifications not expressly approved by National Instruments could void the user's authority to operate the equipment under the FCC Rules.*

*This device complies with the FCC rules only if used with shielded interface cables of suitable quality and construction. National Instruments used such cables to test this device and provides them for sale to the user. The use of inferior or nonshielded interface cables could void the user's authority to operate the equipment under the FCC rules.*

If necessary, consult National Instruments or an experienced radio/television technician for additional suggestions. The following booklet prepared by the FCC may also be helpful: *Interference to Home Electronic Entertainment Equipment Handbook*. This booklet is available from the U.S. Government Printing Office, Washington, DC 20402.

## Canadian Department of Communications

This Class A digital apparatus meets all requirements of the Canadian Interference-Causing Equipment Regulations.

Cet appareil numérique de la classe A respecte toutes les exigences du Règlement sur le matériel brouilleur du Canada.



*Table  
of  
Contents*

---

## About This Manual

How to Use the Manual Set .....	ix
Organization of This Manual .....	x
Conventions Used in This Manual .....	xi
Related Documentation .....	xi
Customer Communication .....	xii

## Chapter 1 Introduction

How to Use This Manual .....	1-1
What You Need to Get Started .....	1-2
GPIB Hardware Overview .....	1-2
Optional Equipment .....	1-3
NI-488.2M Software Overview .....	1-3
Optional Programming Tools .....	1-4

## Chapter 2 Installation and Configuration

Install the GPIB Software .....	2-1
Install the GPIB Hardware .....	2-3
Install the CPCI-GPIB .....	2-3
Install the PMC-GPIB .....	2-4
Configure the NI-488.2M Software .....	2-6

## **Chapter 3**

### **Verifying the Installation**

## **Chapter 4**

### **Using the GPIB Hardware and Software**

Using the NI-488.2M Software.....	4-1
Introduction to the Win32 Interactive Control Utility .....	4-1
Introduction to the GPIB Spy Utility .....	4-2
Running Existing DOS GPIB Applications .....	4-2
General Programming Considerations .....	4-3

## **Appendix A**

### **Uninstalling the Hardware and Software**

Uninstalling the GPIB Hardware .....	A-1
Uninstalling the GPIB Software.....	A-2

## **Appendix B**

### **Forcing Windows 95 to Detect the GPIB Hardware**

## **Appendix C**

### **Troubleshooting and Common Questions**

Troubleshooting EDVR Error Conditions.....	C-1
EDVR Error Condition with ibcntl Set to 0xE028002C (-534249428).....	C-1
EDVR Error Condition with ibcntl Set to 0xE0140025 (-535560155).....	C-1
EDVR Error Condition with ibcntl Set to 0xE0140035 (-535560139).....	C-1
EDVR Error Condition with ibcntl Set to 0xE0320029 (-533594071) or 0xE1050029 (-519765975).....	C-2
EDVR Error Condition with ibcntl set to 0xE0140004 (-535560188) .....	C-2
EDVR Error Condition with ibcntl set to 0xE1030043 (-519897021) .....	C-2
Troubleshooting Device Manager Problems.....	C-2
No National Instruments GPIB Interfaces Item .....	C-3
Missing GPIB Interface .....	C-3
GPIB Interface Not Working Properly .....	C-3
Troubleshooting Diagnostic Utility Failures .....	C-4
Missing Software Components .....	C-4

No Properly Configured GPIB Interfaces Found .....	C-4
GPIB Cables Need To Be Disconnected .....	C-5
Address Resource Conflict .....	C-5
Interrupt Resource Conflict .....	C-6
GPIB Software Problem Encountered .....	C-6
Unknown Problem Encountered.....	C-6
Common Questions.....	C-6

## Appendix D Specifications

Hardware Characteristics .....	D-1
Software Transfer Rates.....	D-2

## Appendix E Customer Communication

## Glossary

## Figures

Figure 2-1. Add/Remove Programs Properties Dialog Box.....	2-1
Figure 2-2. GPIB Software Setup Screen.....	2-2
Figure 2-3. Installing the CPCI-GPIB .....	2-4
Figure 2-4. Installing the PMC-GPIB .....	2-5
Figure 2-5. GPIB Interface That Is Working Properly.....	2-6
Figure 2-6. GPIB Interface That Is Not Working Properly.....	2-7
Figure 2-7. NI-488.2M Settings Tab for the CPCI-GPIB .....	2-8
Figure 2-8. Device Templates Tab for the Logical Device Templates .....	2-9
Figure 3-1. Diagnostic Utility after Testing .....	3-1
Figure A-1. Selecting an Interface to Remove.....	A-2
Figure A-2. Add/Remove Programs Properties Dialog Box.....	A-3
Figure A-3. Uninstallation Results.....	A-4
Figure C-1. GPIB Interface That Is Not Working Properly.....	C-3

## Tables

Table D-1.	CPCI-GPIB Hardware Characteristics .....	D-1
Table D-2.	PMC-GPIB Hardware Characteristics .....	D-2
Table D-3.	NI-488.2M Software Transfer Rates for the CPCI-GPIB and PMC-GPIB .....	D-2

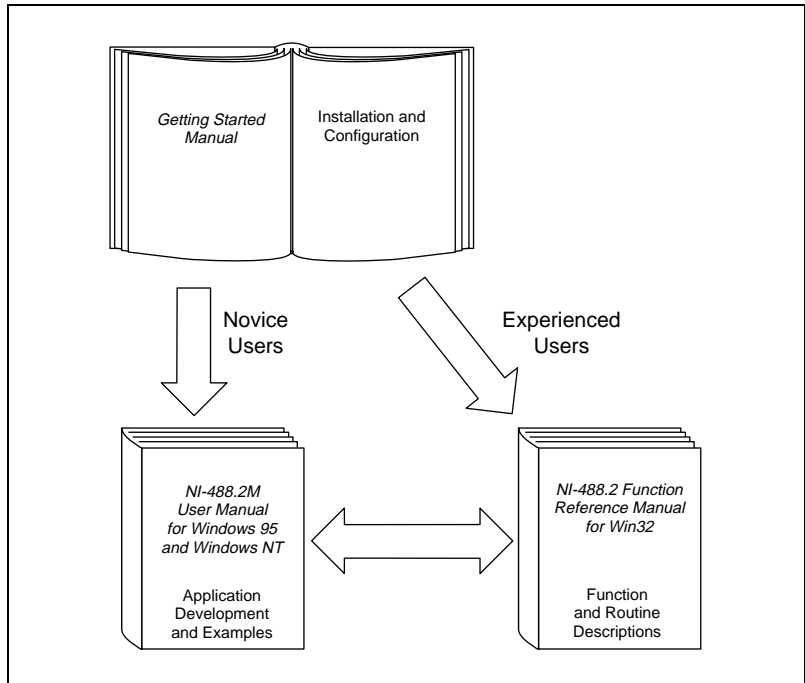


***About  
This  
Manual***

This manual contains instructions to help you install and configure the National Instruments CPCI-GPIB or PMC-GPIB interface board and the NI-488.2M software for Windows 95.

This manual assumes that you are already familiar with Windows 95.

## How to Use the Manual Set



Use this getting started manual to install and configure your CPCI-GPIB or PMC-GPIB and the NI-488.2M software for Windows 95.

Use the *NI-488.2M User Manual for Windows 95 and Windows NT* to learn the basics of GPIB and how to develop an application program. This manual also contains application examples and troubleshooting information.

The *NI-488.2M Function Reference Manual for Win32* contains specific NI-488 function and NI-488.2 routine information, such as format, parameters, and possible errors.

## Organization of This Manual

---

This manual is organized as follows:

- Chapter 1, *Introduction*, explains how to use this manual, lists what you need to get started and optional equipment you can order, and briefly describes the GPIB hardware and software for Windows 95.
- Chapter 2, *Installation and Configuration*, describes how to install and configure the GPIB hardware and software for Windows 95.
- Chapter 3, *Verifying the Installation*, describes how to verify the hardware and software installation.
- Chapter 4, *Using the GPIB Hardware and Software*, helps you get started with the NI-488.2M software for Windows 95.
- Appendix A, *Uninstalling the Hardware and Software*, describes how to uninstall the GPIB hardware and software from Windows 95.
- Appendix B, *Forcing Windows 95 to Detect the GPIB Hardware*, contains instructions to help you install your GPIB interface if Windows 95 has not detected it properly.
- Appendix C, *Troubleshooting and Common Questions*, describes how to troubleshoot problems and answers some common questions.
- Appendix D, *Specifications*, describes the physical characteristics of the GPIB hardware, transfer rates of the NI-488.2M software, and recommended operating conditions.
- Appendix E, *Customer Communication*, contains forms you can use to request help from National Instruments or to comment on our products and manuals.
- The *Glossary* contains an alphabetical list and a description of terms used in this manual, including abbreviations, acronyms, metric prefixes, mnemonics, and symbols.

## Conventions Used in This Manual

---

The following conventions appear in this manual.

- » The » symbol leads you through nested menu items and dialog box options to a final action. The sequence **File»Page Setup»Options»Substitute Fonts** directs you to pull down the **File** menu, select the **Page Setup** item, select **Options**, and finally select the **Substitute Fonts** options from the last dialog box.
- bold** Bold text denotes the names of menus, menu items, parameters, dialog boxes, dialog box buttons or options, icons, windows, or LEDs.
- bold italic* Bold italic text denotes a note, caution, or warning.
- IEEE 488 and IEEE 488.2 IEEE 488 and IEEE 488.2 refer to the ANSI/IEEE Standard 488.1-1987 and the ANSI/IEEE Standard 488.2-1992, respectively, which define the GPIB.
- italic* Italic text denotes emphasis, a cross reference, or an introduction to a key concept. This font also denotes text for which you supply the appropriate word or value, as in Windows 3.x.

The Glossary lists abbreviations, acronyms, metric prefixes, mnemonics, symbols, and terms.

## Related Documentation

---

The following documents contain information that you may find helpful as you read this manual.

- ANSI/IEEE Standard 488.1-1987, *IEEE Standard Digital Interface for Programmable Instrumentation*
- ANSI/IEEE Standard 488.2-1992, *IEEE Standard Codes, Formats, Protocols, and Common Commands*

## Customer Communication

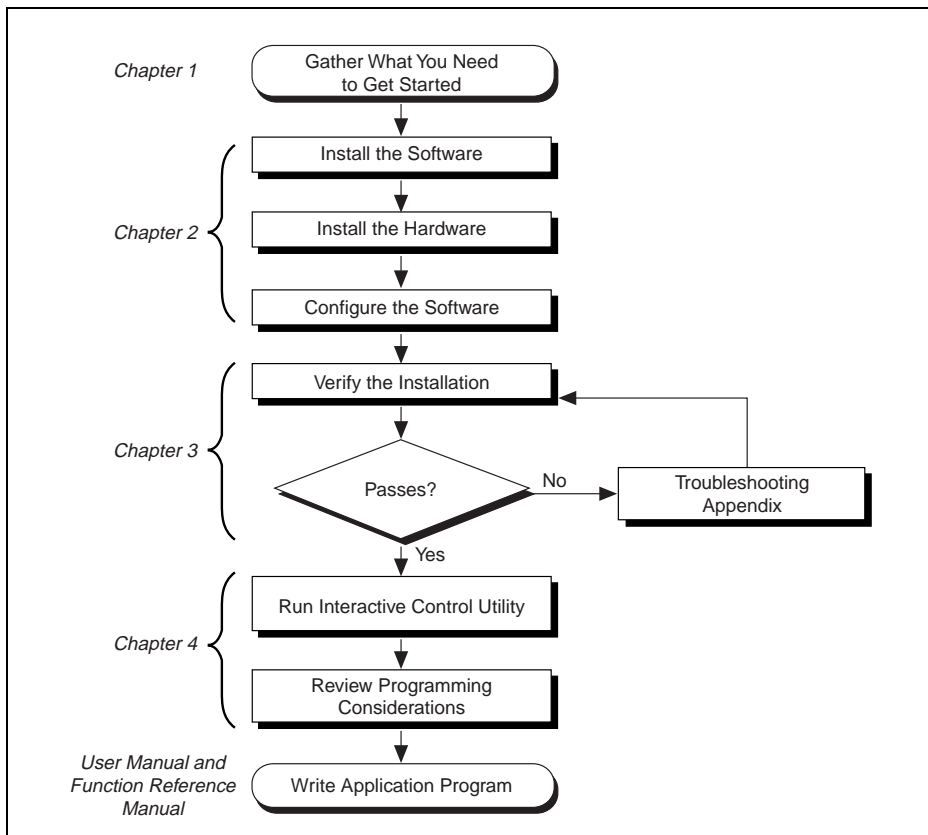
---

National Instruments wants to receive your comments on our products and manuals. We are interested in the applications you develop with our products, and we want to help if you have problems with them. To make it easy for you to contact us, this manual contains comment and configuration forms for you to complete. These forms are in Appendix E, *Customer Communication*, at the end of this manual.

# Introduction

This chapter explains how to use this manual, lists what you need to get started and optional equipment you can order, and briefly describes the GPIB hardware and software for Windows 95.

## How to Use This Manual



## What You Need to Get Started

---

Make sure you have all of the items listed before you attempt to install the hardware and software.

- Windows 95 installed on your system
- CPCI-GPIB or PMC-GPIB board
- The following 3.5 in., high density (1.44 MB) disks, which come in your kit:
  - GPIB Software for Windows 95 (Setup Disk)
  - GPIB Software for Windows 95 (NI-488.2M Software)
- GPIB cable for the CPCI-GPIB—single-shielded or double-shielded, Type X1, X2, X4, X5, or X11, which you can order from National Instruments  
or  
GPIB cable for the PMC-GPIB—Type X13, which is included in your kit

## GPIB Hardware Overview

---

The GPIB hardware transforms your system into a full-functioning GPIB Talker/Listener/Controller. The TNT4882C chip on each GPIB board combines the circuitry of the NAT4882 ASIC, the Turbo488 ASIC, and GPIB transceivers to create a single-chip IEEE 488.2 interface. The TNT4882C also implements the HS488 high-speed protocol, which increases the maximum data transfer rate to up to 7.8 Mbytes/s, depending on the system and the system configuration. For more information about transfer rates, refer to Appendix D, *Specifications*, in this manual. For more information about HS488, refer to Chapter 7, *GPIB Programming Techniques*, in the *NI-488.2M User Manual for Windows 95 and Windows NT*.

The CPCI-GPIB and PMC-GPIB boards are completely software-configurable. They comply with the PCI Local Bus Specification.

The CPCI-GPIB and PMC-GPIB each contain one GPIB load; you can connect up to 14 instruments to one of these interfaces. If you want to use more instruments, you can order a bus extender or expander from

National Instruments. Refer to Appendix D, *Specifications*, for more information about the hardware specifications and recommended operating conditions.

## Optional Equipment

---

Call National Instruments for more information about the following optional equipment.

- Serial or parallel bus extender and cables
- Bus expander/isolator
- GPIB mechanical switch

## NI-488.2M Software Overview

---

The NI-488.2M software includes a native, 32-bit multitasking Windows 95 driver that is fully Plug and Play aware. The driver components are dynamically loaded when Windows 95 detects new GPIB hardware. The driver components are dynamically unloaded when Windows 95 detects the removal of GPIB hardware.

The NI-488.2M software for Windows 95 supports the concurrent use of multiple types of GPIB hardware. For example, you can communicate with GPIB devices through both a CPCI-GPIB and PMC-GPIB in the same system at the same time. The NI-488.2M software is fully integrated into the Windows 95 operating system. It is configurable through the System applet and uninstalleable through the Add/Remove Programs applet of the Control Panel.

The NI-488.2M software, along with the GPIB hardware, transforms your system into a GPIB Talker/Listener/Controller with complete communications and bus management capability. The NI-488.2M software includes the following components:

- Device driver
- Diagnostic test utility
- Configuration utility
- Interactive control program
- Utilities for software development

- Language interface libraries for Microsoft Visual C/C++ 2.0 or higher, Borland C/C++ 4.0 or higher, and Microsoft Visual Basic 4.0 or higher
- Example programs that use NI-488 functions and NI-488.2 routines

Refer to Appendix D, *Specifications*, for information about the NI-488.2M software transfer rates.

## Optional Programming Tools

---

Your kit includes the NI-488.2M software for Windows 95. In addition, you can order the LabWindows®/CVI™ or LabVIEW software from National Instruments. LabWindows/CVI and LabVIEW include instrument driver libraries that make it easier to communicate with your GPIB instruments.

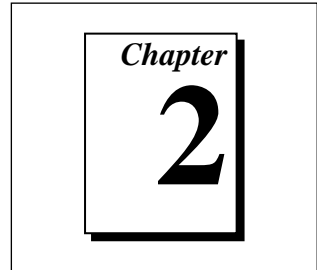
LabWindows/CVI is an interactive ANSI C development environment for building test and measurement and instrument control systems. It includes interactive code-generation tools and a graphical editor for building custom user interfaces. It also includes built-in libraries for IEEE 488.2, VXI, RS-232 control, and plug-in data acquisition. When you order LabWindows/CVI, you also get hundreds of complete instrument drivers, which are modular, source-code programs that handle the communication with your instrument so that you do not have to learn the programming details.

LabVIEW is a complete programming environment that departs from the sequential nature of traditional programming languages and features a graphical programming environment. It includes all the tools needed for instrument control, data acquisition, analysis, and presentation. LabVIEW also includes an extensive instrument driver library.

For more information about LabWindows/CVI and LabVIEW, contact National Instruments.



# Installation and Configuration



This chapter describes how to install and configure the GPIB hardware and software for Windows 95.

## Install the GPIB Software

Before you install the GPIB hardware, complete the following steps.

1. Select **Start»Settings»Control Panel**.
2. Double-click on the **Add/Remove Programs** icon in the Control Panel to launch the Add/Remove Programs applet. A dialog box similar to the one in Figure 2-1 appears.

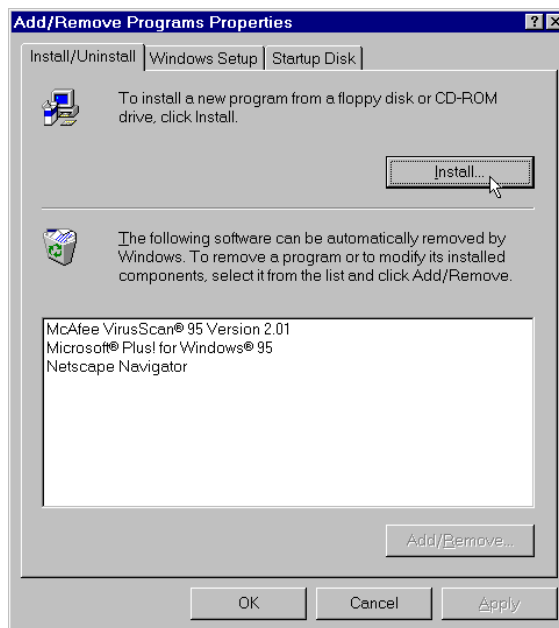


Figure 2-1. Add/Remove Programs Properties Dialog Box

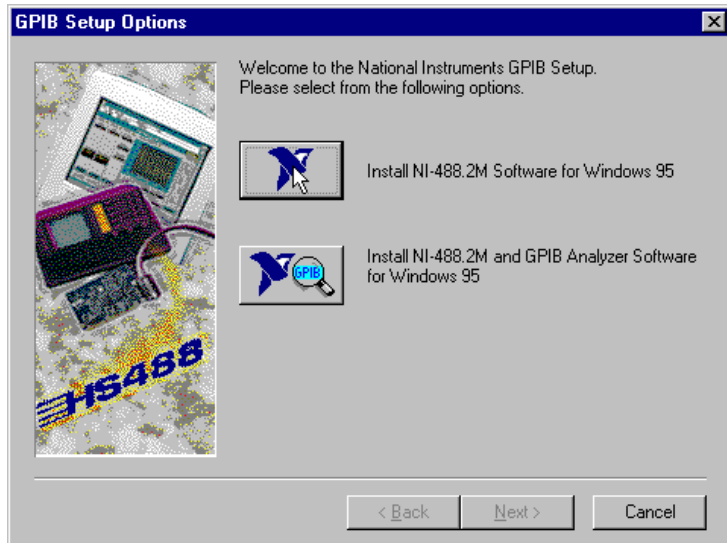
You can use this same applet to uninstall the GPIB software at a later time. Refer to Appendix A, *Uninstalling the Hardware and Software*, for more information.

3. Click on the **Install...** button.
4. Insert the *GPIB Software for Windows 95 (Setup Disk)*, and click on the **Next** button to proceed. The software installation wizard begins with the screen shown in Figure 2-2.
5. Click on the top button to proceed with the installation.



**Note:**

*The second option installs the GPIB Analyzer software, which is not supported by the CPCI-GPIB or PMC-GPIB.*



**Figure 2-2.** GPIB Software Setup Screen

The setup wizard guides you through the necessary steps to install the GPIB software. You may go back and change values where appropriate by choosing **Back**. You can exit the setup where appropriate by choosing **Cancel**.

6. When the setup is complete, restart Windows 95 and proceed to the next section, *Install the GPIB Hardware*.

## Install the GPIB Hardware

---

This section describes how to install your GPIB hardware. Refer to the section that describes the installation for your particular board.

### Install the CPCI-GPIB



**Warning:** *Electrostatic discharge can damage several components on these GPIB boards. To avoid such damage in handling your board, touch the antistatic plastic package to a metal part of your system chassis before removing the board from the package.*

1. Make sure that your system is turned off. Keep the system plugged in so that it remains grounded while you install the CPCI-GPIB.
2. Choose an unused CompactPCI slot in your system.  
For maximum performance, the CPCI-GPIB has an onboard DMA controller that can only be used if the board is installed in a slot that supports bus arbitration, or bus master cards. National Instruments recommends installing the CPCI-GPIB in such a slot. If you install in a non-master slot, you must disable the CPCI-GPIB onboard DMA controller using the board-level call `ibdma`. Refer to the *NI-488.2 Function Reference Manual for Win32* for a complete description of `ibdma`.
3. Remove the slot cover for the slot you have chosen.
4. Insert the CPCI-GPIB board into the slot. It might be a tight fit, but do not force the board into place. Figure 2-3 shows how to install the CPCI-GPIB into a CompactPCI subrack.

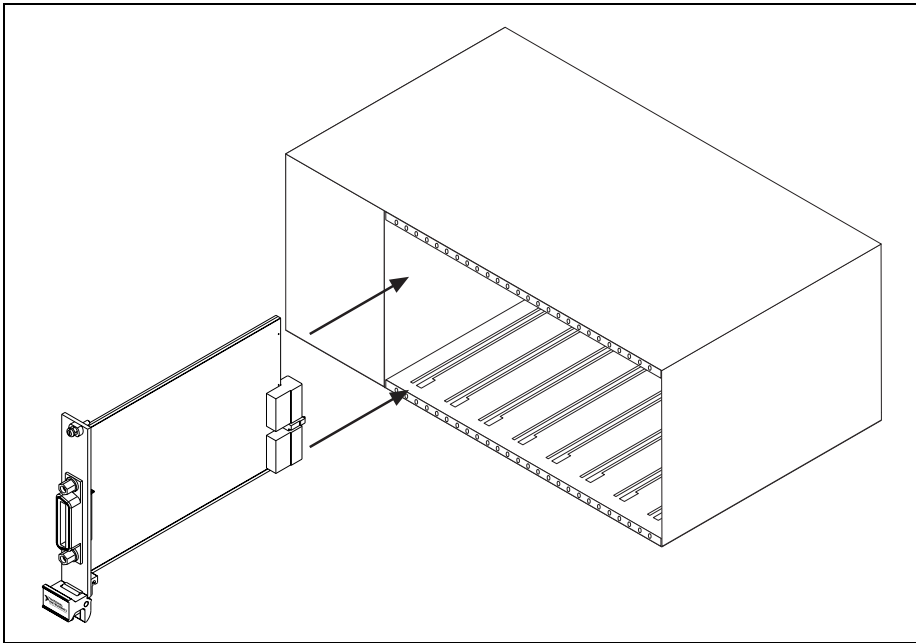


Figure 2-3. Installing the CPCI-GPIB

5. Screw the front panel of the CPCI-GPIB to the front panel mounting rail of the system.
6. Turn on your system and start Windows 95. Windows 95 should automatically detect the GPIB hardware.

Windows 95 automatically determines which driver is appropriate. A **New Hardware Found** dialog box appears, then goes away on its own. If the **New Hardware Found** dialog box does not appear when you restart Windows 95, refer to Appendix B, *Forcing Windows 95 to Detect the GPIB Hardware*.

The CPCI-GPIB installation is now complete. Proceed to the *Configure the NI-488.2M Software* section, later in this chapter.

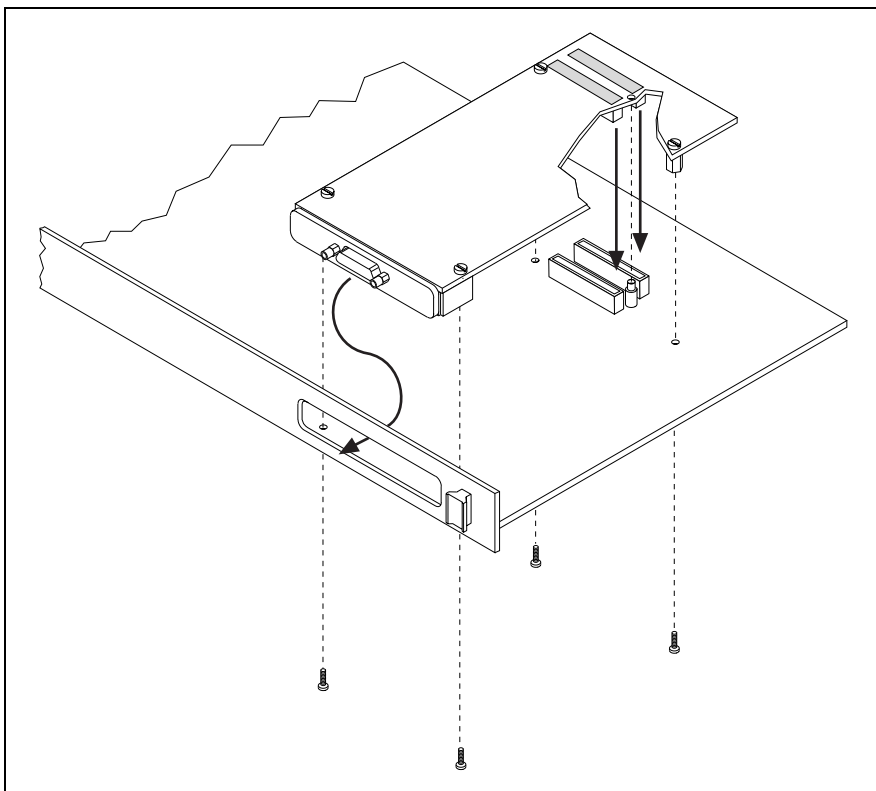
## Install the PMC-GPIB



**Warning:** *Electrostatic discharge can damage several components on these GPIB boards. To avoid such damage in handling your board, touch the antistatic plastic package to a metal part of your system chassis before removing the board from the package.*

Perform the following steps to install the PMC-GPIB.

1. Make sure that your system is turned off.
2. Find an unused PMC slot in your system. You may need to remove the host from the system to gain access to the PMC slot.
3. Remove the corresponding slot filler panel from the host.
4. Insert the PMC-GPIB into the slot as shown in Figure 2-4. It might be a tight fit, but do not force the board into place.



**Figure 2-4.** Installing the PMC-GPIB

5. Use the mounting hardware provided to fasten the PMC-GPIB to the host.
6. Reinstall the host, if you removed it to install the PMC-GPIB.
7. Turn on your system and start Windows 95. Windows 95 should automatically detect the GPIB hardware.

Windows 95 automatically determines which driver is appropriate. A **New Hardware Found** dialog box appears, then goes away on its own. If the **New Hardware Found** dialog box does not appear when you restart Windows 95, refer to Appendix B, *Forcing Windows 95 to Detect the GPIB Hardware*.

The PMC-GPIB hardware installation is now complete. Proceed to the next section, *Configure the NI-488.2M Software*.

## Configure the NI-488.2M Software

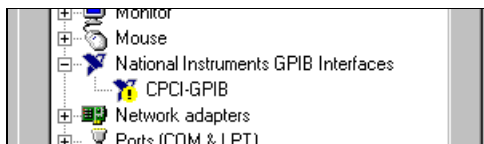
The NI-488.2M configuration utility is fully integrated with the Windows 95 Device Manager. You can use it to examine or modify the configuration of the NI-488.2M software. The context-sensitive online help, available by right-clicking on any of the controls on the configuration utility tabs, includes all of the information that you need to configure the NI-488.2M software properly.

To configure the NI-488.2M software, double-click on the **System** icon under **Start»Settings»Control Panel**. In the **System Properties** dialog box that appears, select the **Device Manager** tab, click the View devices by type radio button at the top of the tab, and double-click the **National Instruments GPIB Interfaces** icon.

If there is no **National Instruments GPIB Interfaces** item or if a circled X or exclamation point (!) appears through the eagle icon, the GPIB interface is not working properly. Figure 2-5 shows an example of a CPCI-GPIB that is working properly, and Figure 2-6 shows an example of a CPCI-GPIB that is not working properly. Refer to the *Troubleshooting Device Manager Problems* section of Appendix C, *Troubleshooting and Common Questions*, to resolve the problem.



Figure 2-5. GPIB Interface That Is Working Properly



**Figure 2-6.** GPIB Interface That Is Not Working Properly

To configure a particular interface, double-click on that interface type in the list of installed interfaces immediately below **National Instruments GPIB Interfaces**. If you are using more than one interface, you must configure the NI-488.2M software to associate a logical name (GPIB0, GPIB1, and so on) with each physical GPIB interface.

The **Resources** tab provides information about the hardware resources assigned to the GPIB interface. Use the **Resources** tab to examine the assigned resources to verify that there are no conflicts. The **Conflicting Device List:** lists any conflicts. If conflicts exist, uncheck the **Use automatic settings** checkbox and use the **Change Setting...** button to select conflict-free resources for the Plug and Play GPIB hardware.

The **NI-488.2M Settings** tab provides information about the software configuration for the GPIB interface. Use the **Interface Name** drop-down box to select a logical name (GPIB0, GPIB1, and so on) for the GPIB interface. Repeat this process for each interface you need to configure. Figure 2-7 shows the **NI-488.2M Settings** tab for a CPCI-GPIB.

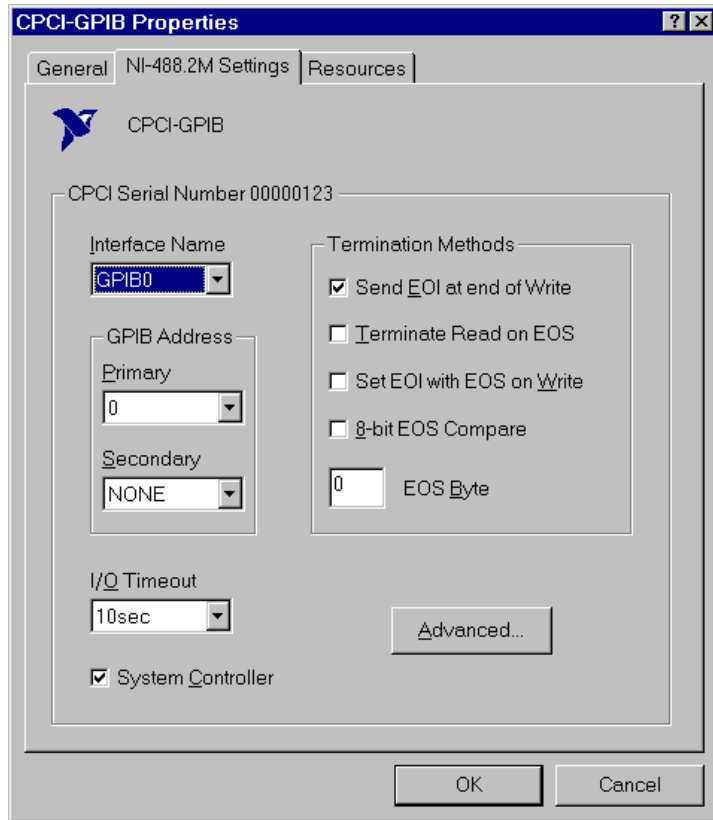
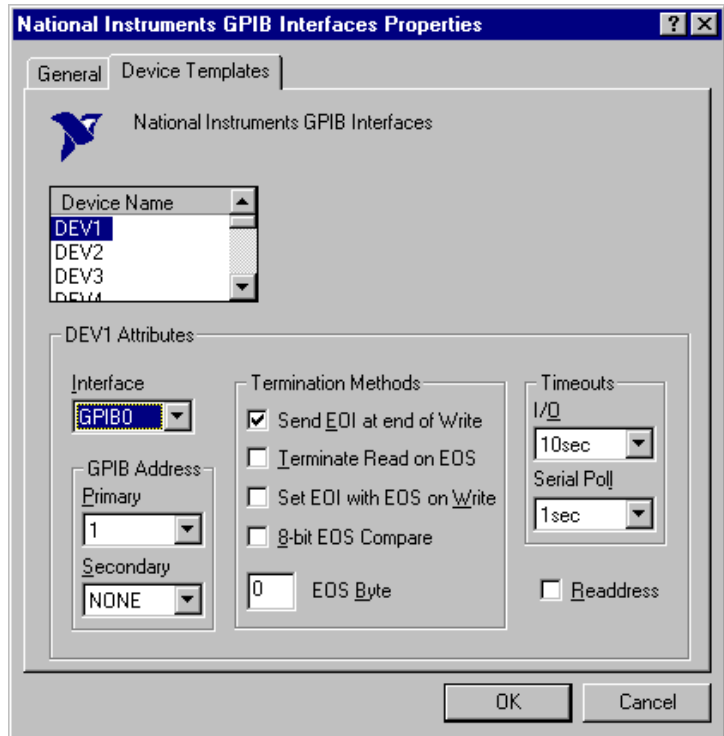


Figure 2-7. NI-488.2M Settings Tab for the CPCI-GPIB

If you want to examine or modify the logical device templates for the GPIB software, select the **National Instruments GPIB Interfaces** icon from the Device Manager tab, and click the **Properties** button. Select the **Device Templates** tab to view the logical device templates, as shown in Figure 2-8.





**Figure 2-8.** Device Templates Tab for the Logical Device Templates

When you have finished configuring the NI-488.2M software, proceed to Chapter 3, *Verifying the Installation*.

# Verifying the Installation

This chapter describes how to verify the hardware and software installation.

You can use the Diagnostic utility, installed with your GPIB software, to test the hardware and software installation. The utility verifies that your hardware and software are functioning properly and that the configuration of your GPIB interfaces does not conflict with anything else in your system.

To run the utility, select the Diagnostic item under **Start»Programs»NI-488.2M Software for Windows 95**.

When you have started the Diagnostic utility, test your GPIB interfaces by clicking on the **Test All** button. If the Diagnostic is successful, it puts a checkmark next to the interface and changes its status from **untested** to **passed**. If the Diagnostic fails, it puts an X next to the interface, and changes its status from **untested** to **failed**. Figure 3-1 shows the Diagnostic utility after it has tested some GPIB interfaces.

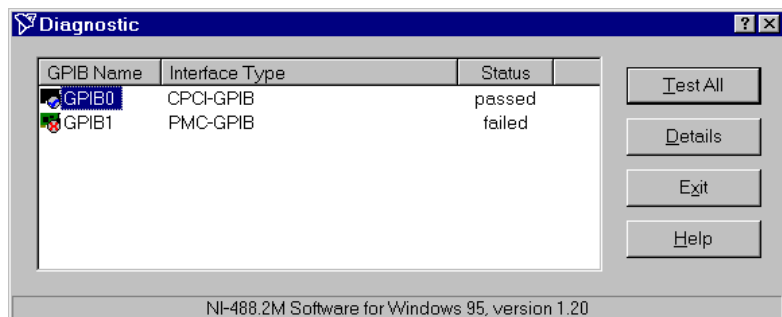
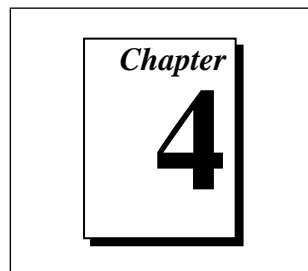


Figure 3-1. Diagnostic Utility after Testing

You can get details on any tested GPIB interface by selecting the interface and clicking the **Details** button. For each failed GPIB interface, select it and click the **Details** button to get a description of the failure. Use that information and the information in Appendix C, *Troubleshooting and Common Questions*, to troubleshoot the problem. Troubleshooting information is also available in the online help for the Diagnostic utility, which you can access by pressing the **Help** button.

# Using the GPIB Hardware and Software

---



This chapter helps you get started with the NI-488.2M software for Windows 95.

## Using the NI-488.2M Software

---

### Introduction to the Win32 Interactive Control Utility

You can use the interactive control utility to enter NI-488 functions and NI-488.2 routines interactively and see the values returned by the function calls. You can use the utility to do the following:

- Verify GPIB communication with your device quickly and easily.
- Learn the NI-488 functions and NI-488.2 routines before you write your application.
- Become familiar with the commands of your device.
- Receive data from your GPIB device.
- Troubleshoot problems with your application.

To run this utility, select the **Win32 Interactive Control** item under **Start»Programs»NI-488.2M Software for Windows 95**. This utility includes extensive online help, available only by entering `help` at the `:` prompt.

For more information about the Win32 Interactive Control utility, refer to the *NI-488.2M User Manual for Windows 95 and Windows NT*.

## Introduction to the GPIB Spy Utility

Included with the NI-488.2M software is GPIB Spy, a Win32 utility that can be used to monitor NI-488.2M calls made by Win32, Win16, and DOS GPIB applications. You can use GPIB Spy to do the following:

- Capture information about NI-488 functions and NI-488.2M routines as they are invoked by your GPIB applications.
- Display captured information, including, but not limited to, input and output parameter values, I/O buffer contents, and return values.
- Save, restore, and print captured information.

To run GPIB Spy, select the **GPIB Spy** item under **Start»Programs»NI-488.2M Software for Windows 95**. For more information about the GPIB Spy utility, refer to Chapter 5, *GPIB Spy Utility*, in the *NI-488.2M User Manual for Windows 95 and Windows NT*, or use its built-in, context-sensitive online help.

## Running Existing DOS GPIB Applications

With the NI-488.2M software properly configured, you can run your existing DOS GPIB applications along with your Win16 and Win32 applications. No DOS device driver is required. In fact, you should make sure that no older version of the GPIB DOS device driver is being loaded from your `config.sys` file, a file located on the boot drive of your system.



### Note:

*To determine if `config.sys` is loading an older GPIB DOS driver, look for the line `device=<path>\gpib.com` in your `config.sys` file, where `<path>` refers to the drive and directory where `gpib.com` is located. If that line appears, either delete it or comment it out, and restart your system.*

To configure the NI-488.2M software to run existing DOS GPIB applications, first make sure that you have installed the NI-488.2M software and your GPIB hardware. Then complete the following steps:

1. Double-click on the System icon under **Start»Settings»Control Panel**.
2. In the **System Properties** dialog box that appears, select the **Device Manager** tab.
3. Click the **View devices by type** radio button at the top of the page.
4. Click on the **National Instruments GPIB Interfaces** icon.

5. Click on the **Properties** button to display the **General** property page for the NI-488.2M software.
6. Select the check box labeled **Enable Support for DOS GPIB Applications**, and click the **OK** button.
7. Restart your system.

After you restart your system, you can begin to run your existing DOS GPIB applications.

For more information about the running existing DOS GPIB applications with the NI-488.2M software for Windows 95, refer to the *NI-488.2M User Manual for Windows 95 and Windows NT*.

## General Programming Considerations

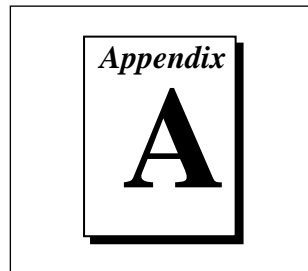
As you begin developing your Win32 NI-488.2M application, remember the following points:

- For your C/C++ application, you must include the NI-488.2M header file in your source code.
- The NI-488.2M software is accessed through the 32-bit DLL, `gpib-32.dll`, either by linking with one of the language interfaces provided with the NI-488.2M software, or by using direct DLL entry from other programming environments.
- Several sample GPIB applications are included with the NI-488.2M software. Use these as a guide for your own application development.

For information about choosing a programming method, developing your application, or compiling and linking, refer to the *NI-488.2M User Manual for Windows 95 and Windows NT*. For detailed information about each NI-488 function and NI-488.2 routine, refer to the *NI-488.2M Function Reference Manual for Win32* or the online help file, `gpib32.hlp`.

# Uninstalling the Hardware and Software

---



This appendix describes how to uninstall the GPIB hardware and software from Windows 95.

## Uninstalling the GPIB Hardware

---

Before physically removing the GPIB hardware from the system, you must remove the hardware information from the Windows 95 Device Manager.

To remove the hardware information from Windows 95, double-click the **System** icon under **Start»Settings»Control Panel**. In the **System Properties** dialog box that appears, select the **Device Manager** tab, click the **View devices by type** button, and double-click on the **National Instruments GPIB Interfaces** icon.

To remove an interface, select it from the list of interfaces under **National Instruments GPIB Interfaces** as shown in Figure A-1, and click the **Remove** button.

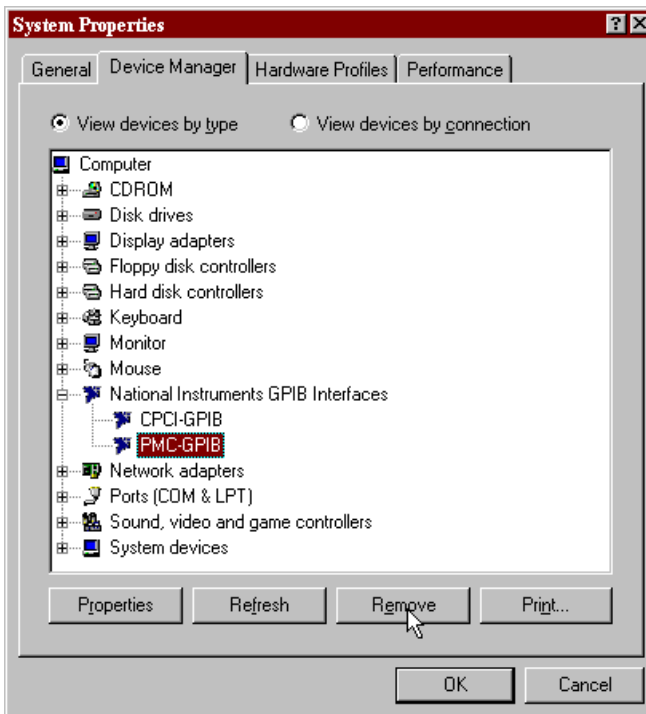


Figure A-1. Selecting an Interface to Remove

After you remove the appropriate interface information from the Device Manager, you should shut down Windows 95, switch off the system, and physically remove the interface.

## Uninstalling the GPIB Software

---

Before uninstalling the software, you should remove all GPIB interface information from the Windows 95 Device Manager, as described in the previous section.

To remove the GPIB software, select **Start»Settings»Control Panel** and double-click on the **Add/Remove Programs** icon in the Control Panel. A dialog box similar to Figure A-2 appears. This dialog box lists the software available for removal.



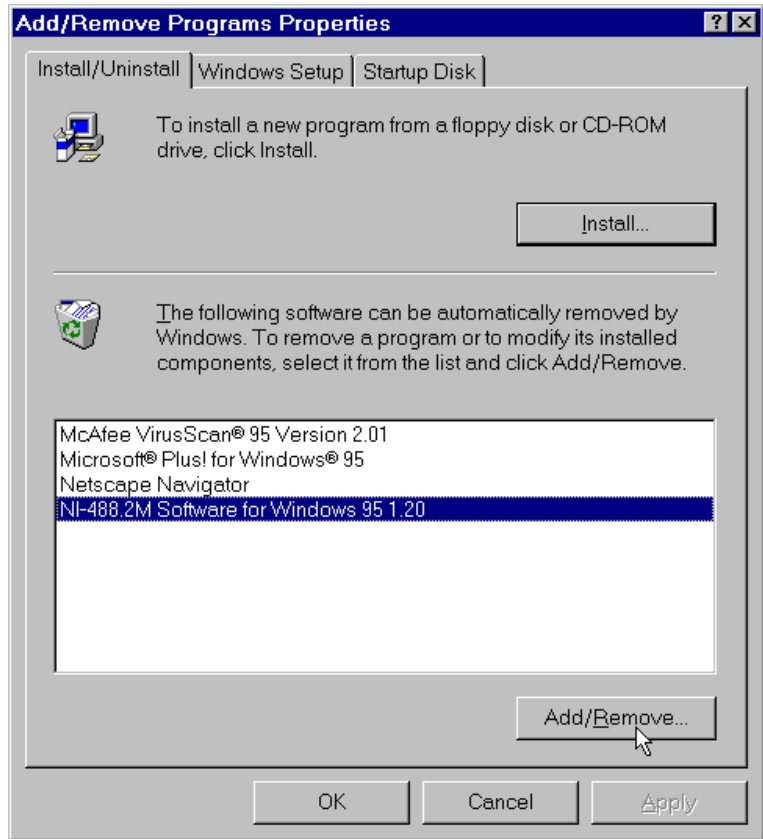
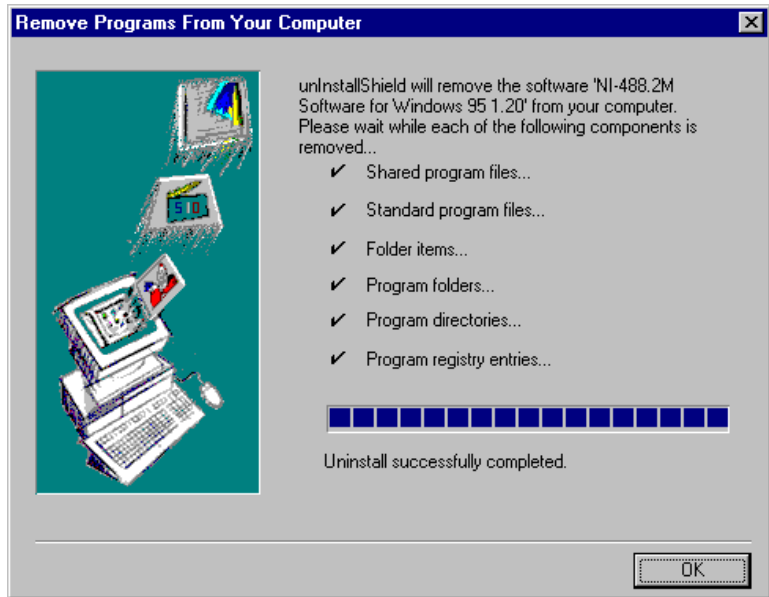


Figure A-2. Add/Remove Programs Properties Dialog Box

Select the GPIB software you want to remove, and click the **Add/Remove...** button. The uninstall program removes all folders, programs, VxDs, DLLs, and registry entries associated with the GPIB software.

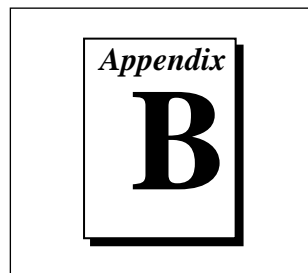
Figure A-3 shows the results of a successful uninstallation.



**Figure A-3.** Uninstallation Results

If you want to reinstall the hardware and software, refer to Chapter 2, *Installation and Configuration*.

# Forcing Windows 95 to Detect the GPIB Hardware



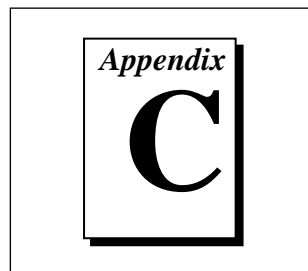
This appendix contains instructions to help you install your GPIB interface if Windows 95 has not detected it properly.

If Windows 95 does not detect your interface properly, it may not display the **New Hardware Found** dialog boxes when expected, or the driver may return an EDVR error when you try to access the GPIB interface. This problem occurs if Windows 95 has already configured the GPIB interface as an “other device.” To fix the problem, complete the following steps.

1. Select **Start»Settings»Control Panel**.
2. Double-click on the **System** icon to display the **System Properties** dialog box for the system.
3. Click on the **Device Manager** tab at the top of the **System Properties** sheet to bring up the **Device Manager** property page. Make sure the **View devices by type** button at the top of the Device Manager page is selected.
4. Click on the + sign next to **Other Devices** to display a list of all the hardware devices that Windows 95 has detected and configured as **Other Devices**.
5. For each National Instruments GPIB interface listed, select the interface by clicking on it, and then click on the **Remove** button to remove the interface from the list of **Other Devices**.
6. After you have removed all of the National Instruments GPIB interfaces from the list of **Other Devices**, click on the **Refresh** button to force Windows 95 to detect each National Instruments GPIB interface and to display a **New Hardware Found** dialog box for each one.
7. Proceed with the hardware installation, as described in Chapter 2, *Installation and Configuration*.

# Troubleshooting and Common Questions

---



This appendix describes how to troubleshoot problems and answers some common questions.

## Troubleshooting EDVR Error Conditions

---

In some cases, calls to NI-488 functions or NI-488.2 routines may return with the ERR bit set in `ibsta` and the value EDVR in `iberr`. The value stored in `ibcntl` is useful in troubleshooting the error condition.

### EDVR Error Condition with `ibcntl` Set to 0xE028002C (-534249428)

If a call is made with a board number that is within the range of allowed board numbers (typically 0 to 3), but which has not been assigned to a GPIB interface, an EDVR error condition occurs with `ibcntl` set to 0xE028002C. You can assign a board number to a GPIB interface by configuring the NI-488.2M software and selecting an interface name. Refer to the *Configure the NI-488.2M Software* section of Chapter 2, *Installation and Configuration*, for information about how to configure the NI-488.2M software.

### EDVR Error Condition with `ibcntl` Set to 0xE0140025 (-535560155)

If a call is made with a board number that is not within the range of allowed board numbers (typically 0 to 3), an EDVR error condition occurs with `ibcntl` set to 0xE0140025.

### EDVR Error Condition with `ibcntl` Set to 0xE0140035 (-535560139)

If a call is made with a device name that is not listed in the logical device templates that are part of the NI-488.2M configuration utility, an EDVR error condition occurs with `ibcntl` set to 0xE0140035.

## EDVR Error Condition with `ibcntl` Set to 0xE0320029 (-533594071) or 0xE1050029 (-519765975)

If a call is made with a board number that is assigned to a GPIB interface that is unusable because of a resource conflict, an EDVR error condition occurs with `ibcntl` set to 0xE0320029 or 0xE1050029. This error condition indicates that the GPIB interface is not working properly. Refer to the *GPIB Interface Not Working Properly* section later in this appendix.

## EDVR Error Condition with `ibcntl` set to 0xE0140004 (-535560188)

This error may occur if the GPIB interface has not been correctly installed and detected by Windows 95. Refer to Chapter 2, *Installation and Configuration*, for details on how to install the GPIB hardware. If you have already followed those instructions and still receive this error, Windows 95 might have configured the GPIB interface as an "other device." Refer to Appendix B, *Forcing Windows 95 to Detect the GPIB Hardware*, for information about how to solve this problem.

## EDVR Error Condition with `ibcntl` set to 0xE1030043 (-519897021)

This error occurs if you have enabled DOS GPIB support and attempted to run an existing GPIB DOS application that was compiled with an older, unsupported DOS language interface.

## Troubleshooting Device Manager Problems

---

The Windows 95 Device Manager contains configuration information for all of the GPIB hardware it is aware of that is installed in your system. To start the Windows 95 Device Manager, double-click on the **System** icon under **Start»Settings»Control Panel**. In the **System Properties** box that appears, select the **Device Manager** tab and click the **View devices by type** radio button at the top of the tab.

If there is no **National Instruments GPIB Interfaces** item and you are certain you have a GPIB interface installed, refer to the *No National Instruments GPIB Interfaces Item* section of this appendix.

If the **National Instruments GPIB Interfaces** item exists, but the GPIB interface you are looking for is not listed there, refer to the *Missing GPIB Interface* section of this appendix.

If the GPIB interface has a circled X or (!) over its icon, refer to the *GPIB Interface Not Working Properly* section later in this appendix.

## No National Instruments GPIB Interfaces Item

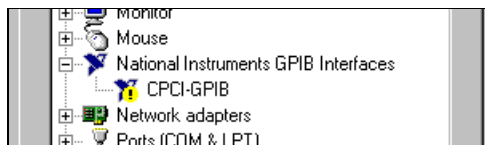
If you are certain you have a Plug and Play GPIB interface installed, but no **National Instruments GPIB Interfaces** item appears in the **Device Manager**, the interface is probably incorrectly listed under **Other Devices**. Double-click on the **Other Devices** item in the Device Manager and, one by one, remove each National Instruments GPIB interface listed there by selecting its name and then clicking the **Remove** button. After all of the National Instruments GPIB interfaces have been removed from **Other Devices**, click the **Refresh** button. At this point, the system rescans the installed hardware, and the GPIB interface should show up under **National Instruments GPIB Interfaces** without any problems. If the problem persists, contact National Instruments.

## Missing GPIB Interface

If the **National Instruments GPIB Interfaces** item exists, but the GPIB interface you are looking for is not listed there, the GPIB interface is not properly installed. For Plug and Play GPIB hardware, this means the interface is not physically present in the system.

## GPIB Interface Not Working Properly

If a GPIB interface is not working properly, its National Instruments icon has a circled X or circled exclamation mark (!) overlaid on it, as shown in Figure C-1.



**Figure C-1.** GPIB Interface That Is Not Working Properly

This problem can occur for several reasons. If you encounter this problem, the Device Manager should list an error code that indicates why the problem occurred. To see the error code for a particular interface, select the name of the interface and click on the **Properties** button to go to the **General** tab for that GPIB interface. The **Device Status** section of the **General** tab shows the error code. Locate the error code in the

following list to find out why your GPIB interface is not working properly.

- Code 22: The GPIB interface is disabled. To enable the GPIB interface, check the appropriate configuration checkbox in the **Device Usage** section of the **General** tab.
- Code 24: The GPIB interface is not present, or the Device Manager is unaware that the GPIB interface is present. To solve this problem, select the interface in the Device Manager, and click on the **Remove** button. Next, click the **Refresh** button. At this point, the system rescans the installed hardware, and the GPIB interface should show up without any problems. If the problem persists, contact National Instruments.
- Code 27: Windows 95 was unable to assign the GPIB interface any resources. To solve this problem, free up system resources by disabling other unnecessary hardware so that enough resources are available for the GPIB interface.

## Troubleshooting Diagnostic Utility Failures

---

The following sections explain common error messages generated by the Diagnostic utility.

### Missing Software Components

This error occurs if the software components that are necessary for the GPIB software for Windows 95 to function correctly are not present in the system. If you encounter this problem, reinstall the GPIB software for Windows 95 and run the Diagnostic utility again.

### No Properly Configured GPIB Interfaces Found

This error occurs if no GPIB interfaces are physically present in the system, if the Device Manager detected problems with the GPIB interfaces, or if you have not assigned logical board names to your GPIB interfaces using the Device Manager. If you encounter this problem, use the Device Manager to examine the installed GPIB interfaces, resolve any problems reported by the Device Manager, and ensure that logical board names are assigned to each interface. Then, run the Diagnostic utility again.

To access this information in the Device Manager, complete the following steps:

1. Select the **System** icon under **Start»Settings»Control Panel**.
2. In the **System Properties** dialog box that appears, select the **Device Manager** tab.
3. Click the **View devices by type** radio button at the top of the Device Manager tab.
4. Double-click the **National Instruments GPIB Interfaces** icon. If there is no **National Instruments GPIB Interfaces** icon, either no GPIB interfaces are installed in your system or the GPIB software for Windows 95 is installed incorrectly. If you see a **National Instruments GPIB Interfaces** icon, and a GPIB interface listed under it has a circled X or ! over its icon, refer to the *Troubleshooting Device Manager Problems* section in this appendix.
5. After you have opened the **National Instruments GPIB Interfaces** icon, double-click on the GPIB interface name and select the **NI-488.2M Settings** tab to examine the logical board name associated with that interface. If it is set to **None**, change it to the appropriate name, such as **GPIB0**.

## GPIB Cables Need To Be Disconnected

This error occurs if you have any GPIB cables connected to the GPIB interface. Disconnect all GPIB cables and run the Diagnostic utility again.

## Address Resource Conflict

This error occurs if the address resources assigned to a GPIB interface conflict with the address resources being used by other devices in the system. Resource conflicts typically occur when your system contains legacy boards that use resources that have not been reserved properly with the Device Manager. If a resource conflict exists, write down the resource that caused the conflict and refer to the *Microsoft Windows 95 Online Help* for instructions on how to use the Device Manager to reserve memory resources for legacy boards. After the conflict has been resolved, run the Diagnostic utility again.



## Interrupt Resource Conflict

This error occurs if the interrupt resources assigned to a GPIB interface conflict with the interrupt resources being used by other devices in the system. Resource conflicts typically occur when your system contains legacy boards that use resources that have not been reserved properly with the Device Manager. If a resource conflict exists, write down the resource that caused the conflict and refer to the *Microsoft Windows 95 Online Help* for instructions on how to use the Device Manager to reserve IRQ resources for legacy boards. After the conflict has been resolved, run the Diagnostic utility again.

## GPIB Software Problem Encountered

This error occurs if the Diagnostic utility detects that it is unable to communicate correctly with the GPIB hardware using the installed GPIB software. If you get this error, shut down your system, restart it, and run the Diagnostic utility again. If the problem persists, try reinstalling the GPIB software for Windows 95.

## Unknown Problem Encountered

This error occurs if an unknown problem is encountered while trying to execute the Diagnostic utility. If you encounter this problem, shut down your system, restart it, and run the Diagnostic utility again. If the problem persists, try reinstalling the GPIB software for Windows 95.

## Common Questions

---

### **Can I use the CPCI-GPIB in a slot that is not configured for bus arbitration?**

National Instruments recommends installing the CPCI-GPIB into a slot that supports bus arbitration, or bus master cards. But you can install the board into a non-master slot, if you disable the onboard DMA controller. Refer to the *Install the CPCI-GPIB* section in Chapter 2, *Installation and Configuration*, for more information.

**What do I do if my GPIB hardware is listed in the Windows 95 Device Manager with a circled X or exclamation point (!) overlaid on it?**

Refer to the *GPIB Interface Not Working Properly* section of this appendix for specific information about what might cause this problem. If you have already completed the troubleshooting steps, fill out the forms in Appendix E, *Customer Communication*, and contact National Instruments.

**How can I determine which type of GPIB hardware I have installed?**

Run the NI-488.2M configuration utility. To run the utility, select **Start»Settings»Control Panel»System**. Select the **Device Manager** tab in the **System Properties** dialog box. Click on the **View devices by type** radio button at the top of the sheet. If any GPIB hardware is correctly installed, a National Instruments GPIB Interfaces icon appears in the list of device types. Double-click this icon to see a list of installed GPIB hardware.

**How can I determine which version of the NI-488.2M software I have installed?**

Run the Diagnostic utility. To run the utility, select the **Diagnostic** item under **Start»Programs»NI-488.2M Software for Windows 95**. The Diagnostic utility displays information about the version of the NI-488.2M software currently installed.

**What do I do if the Diagnostic utility fails with an error?**

Refer to the *Troubleshooting Diagnostic Utility Failures* section of this appendix for specific information about what might cause the Diagnostic utility to fail. If you have already completed the troubleshooting steps, fill out the forms in Appendix E, *Customer Communication*, and contact National Instruments.

**How many GPIB interfaces can I configure for use with my GPIB software for Windows 95?**

The GPIB software for Windows 95 can be configured to communicate with up to 100 GPIB interfaces.

### **How many devices can I configure for use with my GPIB software for Windows 95?**

The GPIB software for Windows 95 provides a total of 1,024 logical devices for applications to use. The default number of devices is 32. The maximum number of physical devices you should connect to a single GPIB interface is 14, or fewer, depending on your system configuration.

### **Are interrupts and DMA required for the GPIB software for Windows 95?**

Neither interrupts nor DMA are required.

### **When should I use the Win32 Interactive Control utility?**

You can use the Win32 Interactive Control utility to test and verify instrument communication, troubleshoot problems, and develop your application program. For more information, refer to Chapter 4, *Using the GPIB Hardware and Software*.

### **How do I use an NI-488.2M language interface?**

For information about using NI-488.2M language interfaces, refer to Chapter 3, *Developing Your Application*, in the *NI-488.2M User Manual for Windows 95 and Windows NT*.

### **Why would GPIB data transfers unexpectedly time out with a CPCI-GPIB?**

By default, the GPIB software for the CPCI-GPIB and Windows 95 attempts to use high-speed DMA to perform GPIB data transfers over the PCI bus. This transfer method requires that the slot your CPCI-GPIB is placed in must be capable of bus arbitration. If it is not, the GPIB transfer times out. To resolve this problem, first try to move your CPCI-GPIB to a slot that supports bus mastering. If no such slot is available, you need to disable DMA on the CPCI-GPIB by issuing an `i.bdma` command and passing it a value of zero.

### **Why does the uninstall program leave some components installed?**

The uninstall program removes only items that the installation program installed. If you add anything to a directory that was created by the installation program, the uninstall program does not delete that directory, because the directory is not empty after the uninstallation. You will need to remove any remaining components yourself.

**What information should I have before I call National Instruments?**

When you call National Instruments, you should have all of the information filled out on the *Hardware and Software Configuration Form* in Appendix E, *Customer Communication*.

# Specifications

This appendix describes the physical characteristics of the GPIB hardware, transfer rates of the NI-488.2M software, and recommended operating conditions.

## Hardware Characteristics

**Table D-1.** CPCI-GPIB Hardware Characteristics

Characteristic	Specification
Dimensions	100 by 160 mm (3.94 by 6.3 in.)
Power Requirement (from CompactPCI bus)	+5 VDC    600 mA typical 800 mA maximum
I/O Connector	IEEE 488 Standard 24-pin
Operating Environment Temperature Relative Humidity	0° to 50° C 10% to 90%, noncondensing
Storage Environment Temperature Relative Humidity	-20° to 70° C 5% to 95%, noncondensing
EMI	FCC Class A Verified

**Table D-2.** PMC-GPIB Hardware Characteristics

Characteristic	Specification
Dimensions	74 by 149 mm (2.9 by 5.9 in.)
Power Requirement (from PMC bus)	+5 VDC    600 mA typical 800 mA maximum
I/O Connector	Micro D-sub 25-pin
PCI Signaling Environment	+5 VDC
Power Dissipation	3 Watts typical 4 Watts maximum
Operating Environment Temperature Relative Humidity	0° to 50° C 10% to 90%, noncondensing
Storage Environment Temperature Relative Humidity	-20° to 70° C 5% to 95%, noncondensing
EMI	FCC Class A Verified

## Software Transfer Rates

**Table D-3.** NI-488.2M Software Transfer Rates for the CPCI-GPIB and PMC-GPIB

GPIB Hardware	Transfer Method	Maximum GPIB Transfer Rate
CPCI-GPIB	3-wire (IEEE 488)	1.5 Mbytes/s*
	High Speed (HS488)	7.8 Mbytes/s*
PMC-GPIB	3-wire (IEEE 488)	1.5 Mbyte/s*
	High Speed (HS488)	7.8 Mbyte/s*
* Actual speed may vary considerably from speed shown because of system and instrumentation capabilities.		

# Customer Communication

---

For your convenience, this appendix contains forms to help you gather the information necessary to help us solve technical problems you might have as well as a form you can use to comment on the product documentation. Filling out a copy of the *Technical Support Form* before contacting National Instruments helps us help you better and faster.

National Instruments provides comprehensive technical assistance around the world. In the U.S. and Canada, applications engineers are available Monday through Friday from 8:00 a.m. to 6:00 p.m. (central time). In other countries, contact the nearest branch office. You may fax questions to us at any time.

## Electronic Services



### Bulletin Board Support

National Instruments has BBS and FTP sites dedicated for 24-hour support with a collection of files and documents to answer most common customer questions. From these sites, you can also download the latest instrument drivers, updates, and example programs. For recorded instructions on how to use the bulletin board and FTP services and for BBS automated information, call (512) 795-6990. You can access these services at:

United States: (512) 794-5422

Up to 14,400 baud, 8 data bits, 1 stop bit, no parity

United Kingdom: 01635 551422

Up to 9,600 baud, 8 data bits, 1 stop bit, no parity

France: 01 48 65 15 59

Up to 9,600 baud, 8 data bits, 1 stop bit, no parity



### FTP Support

To access our FTP site, log on to our Internet host, `ftp.natinst.com`, as anonymous and use your Internet address, such as `joesmith@anywhere.com`, as your password. The support files and documents are located in the `/support` directories.



## Fax-on-Demand Support

Fax-on-Demand is a 24-hour information retrieval system containing a library of documents on a wide range of technical information. You can access Fax-on-Demand from a touch-tone telephone at (512) 418-1111.



## E-Mail Support (currently U.S. only)

You can submit technical support questions to the applications engineering team through e-mail at the Internet address listed below. Remember to include your name, address, and phone number so we can contact you with solutions and suggestions.

support@natinst.com

## Telephone and Fax Support

National Instruments has branch offices all over the world. Use the list below to find the technical support number for your country. If there is no National Instruments office in your country, contact the source from which you purchased your software to obtain support.



### Telephone



### Fax

Australia	02 9874 4100	02 9874 4455
Austria	0662 45 79 90 0	0662 45 79 90 19
Belgium	02 757 00 20	02 757 03 11
Canada (Ontario)	905 785 0085	905 785 0086
Canada (Quebec)	514 694 8521	514 694 4399
Denmark	45 76 26 00	45 76 26 02
Finland	09 527 2321	09 502 2930
France	01 48 14 24 24	01 48 14 24 14
Germany	089 741 31 30	089 714 60 35
Hong Kong	2645 3186	2686 8505
Israel	03 5734815	03 5734816
Italy	02 413091	02 41309215
Japan	03 5472 2970	03 5472 2977
Korea	02 596 7456	02 596 7455
Mexico	5 520 2635	5 520 3282
Netherlands	0348 433466	0348 430673
Norway	32 84 84 00	32 84 86 00
Singapore	2265886	2265887
Spain	91 640 0085	91 640 0533
Sweden	08 730 49 70	08 730 43 70
Switzerland	056 200 51 51	056 200 51 55
Taiwan	02 377 1200	02 737 4644
U.K.	01635 523545	01635 523154



# Technical Support Form

Photocopy this form and update it each time you make changes to your software or hardware, and use the completed copy of this form as a reference for your current configuration. Completing this form accurately before contacting National Instruments for technical support helps our applications engineers answer your questions more efficiently.

If you are using any National Instruments hardware or software products related to this problem, include the configuration forms from their user manuals. Include additional pages if necessary.

Name \_\_\_\_\_

Title \_\_\_\_\_

Company \_\_\_\_\_

Address \_\_\_\_\_

\_\_\_\_\_

Fax ( \_\_\_\_ ) \_\_\_\_\_ Phone ( \_\_\_\_ ) \_\_\_\_\_

Computer brand \_\_\_\_\_ Model \_\_\_\_\_ Processor \_\_\_\_\_

Operating system (include version number) \_\_\_\_\_

Clock Speed \_\_\_\_\_ MHz RAM \_\_\_\_\_ MB Display adapter \_\_\_\_\_

Mouse \_\_\_\_ yes \_\_\_\_ no Other adapters installed \_\_\_\_\_

Hard disk capacity \_\_\_\_\_ MB Brand \_\_\_\_\_

Instruments used \_\_\_\_\_

National Instruments hardware product model \_\_\_\_\_ Revision \_\_\_\_\_

Configuration \_\_\_\_\_

National Instruments software product \_\_\_\_\_ Version \_\_\_\_\_

Configuration \_\_\_\_\_

The problem is \_\_\_\_\_

\_\_\_\_\_

\_\_\_\_\_

\_\_\_\_\_

List any error messages \_\_\_\_\_

\_\_\_\_\_

\_\_\_\_\_

The following steps will reproduce the problem \_\_\_\_\_

\_\_\_\_\_

\_\_\_\_\_

# Hardware and Software Configuration Form

Record the settings and revisions of your hardware and software on the line to the right of each item. Complete a new copy of this form each time you revise your software or hardware configuration, and use this form as a reference for your current configuration. Completing this form accurately before contacting National Instruments for technical support helps our applications engineers answer your questions more efficiently.

## National Instruments Products

GPIB Interface Type and Revision \_\_\_\_\_

GPIB Software for Windows 95 Version Number on Disk \_\_\_\_\_

Programming Language Interface Version \_\_\_\_\_

Diagnostic Utility Results \_\_\_\_\_

## Other Products

### Resource Summary Report from the Device Manager

To create this report, first display the **System Properties** dialog box for the computer by double-clicking on the **System** icon under **Start»Settings»Control Panel**. Then click on the **Device Manager** tab and highlight the **Computer** icon. Click on the **Print** button, and check the **Print to file** checkbox in the **Print** dialog box before clicking on **OK**.

\_\_\_\_\_  
\_\_\_\_\_

## Programming Environment Information

Programming Language \_\_\_\_\_

Compiler Vendor \_\_\_\_\_ Compiler Version \_\_\_\_\_

## Application Information

DOS Application \_\_\_\_\_ Win16 Application \_\_\_\_\_ Win32 Application \_\_\_\_\_

If Win16 or Win32, method of accessing DLL (link with language interface or direct entry?)

\_\_\_\_\_

# Documentation Comment Form

National Instruments encourages you to comment on the documentation supplied with our products. This information helps us provide quality products to meet your needs.

**Title:** *Getting Started with Your CPCI-GPIB or PMC-GPIB and the NI-488.2M™ Software for Windows 95*

**Edition Date:** December 1996

**Part Number:** 321383A-01

Please comment on the completeness, clarity, and organization of the manual.

---

---

---

---

---

---

---

---

If you find errors in the manual, please record the page numbers and describe the errors.

---

---

---

---

---

---

---

---

Thank you for your help.

Name \_\_\_\_\_

Title \_\_\_\_\_

Company \_\_\_\_\_

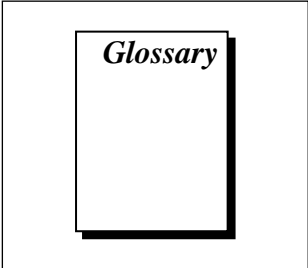
Address \_\_\_\_\_

\_\_\_\_\_

Phone ( \_\_\_\_\_ ) \_\_\_\_\_

**Mail to:** Technical Publications  
National Instruments Corporation  
6504 Bridge Point Parkway  
Austin, TX 78730-5039

**Fax to:** Technical Publications  
National Instruments Corporation  
(512) 794-5678

A rectangular box containing a smaller, slightly offset rectangle with the word "Glossary" written in a serif font inside it.

## *Glossary*

---

<b>Prefix</b>	<b>Meaning</b>	<b>Value</b>
m-	milli-	$10^{-3}$
c-	centi-	$10^{-2}$
k-	kilo-	$10^3$
M-	mega-	106

°	degrees
%	percent
A	amperes
AC	alternating current
ANSI	American National Standards Institute
ASIC	application-specific integrated circuit
base I/O address	lowest I/O address used by the GPIB hardware
C	Celsius
DLL	dynamic link library
DMA	direct memory access
EISA	Extended Industry Standard Architecture
EMI	electromagnetic interference

## *Glossary*

FCC	Federal Communications Commission
GPIB	General Purpose Interface Bus
Hz	hertz
I/O	input/output
IEEE	Institute of Electrical and Electronic Engineers
in.	inches
IRQ	interrupt request
ISA	Industry Standard Architecture
KB	kilobytes of memory
legacy board	ISA board whose system resources are chosen by changing physical switches or jumpers on the board
m	meters
MB	megabytes of memory
PC	personal computer
PnP	Plug and Play
RAM	random-access memory
resource	hardware settings used by devices in a computer system, including ISA interrupt level, DMA channel, and base I/O address
s	seconds
VDC	volts direct current